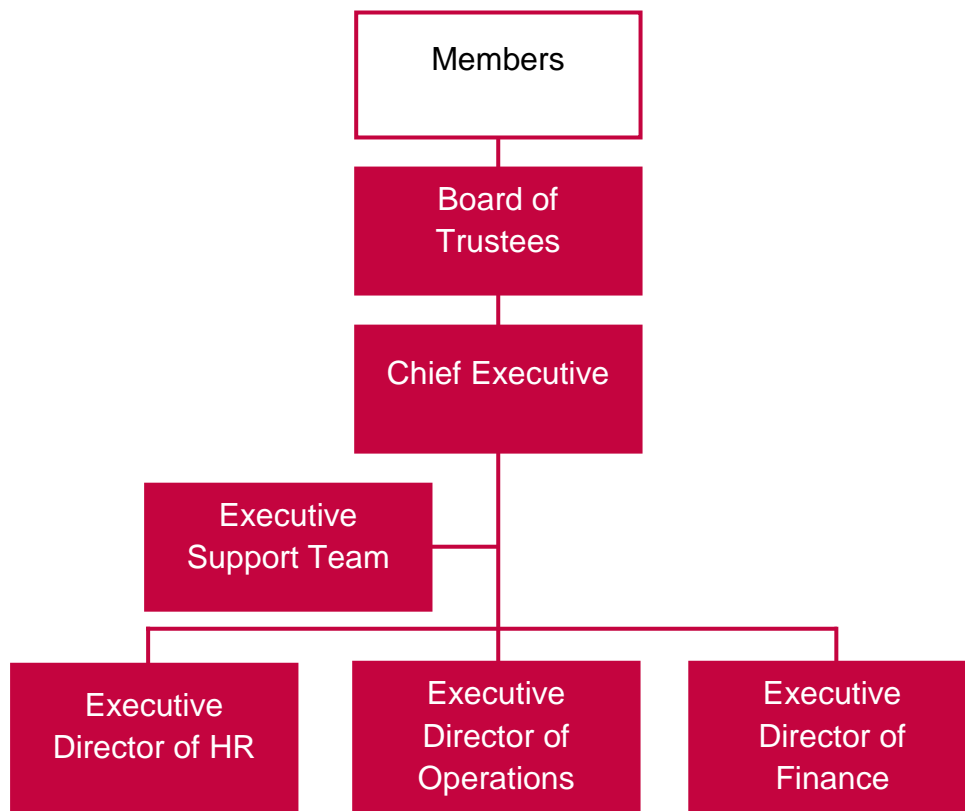


# Our structure and governance

## Our people

We know that providing high quality health and social care services is underpinned by employing passionate, skilled and caring individuals. That is why we aim to nurture a working environment that will attract, inspire, train and retain the very best people in our sector.

Our Executive Management Team currently consists of 4 employees: Chief Executive, Executive Director of Operations, Executive Director of Finance and Executive Director of HR.



## **Our governance**

In accordance with the Charity Commission Guidelines, all registered charities are required to be governed by a governing body. In our care, we are governed by a board of trustees.

We have a strong and diverse Board of Trustees who represent a range of different backgrounds and professions, including carers, health and social care sector professionals, and those who have experience of finance, law, business, education and HR.

The main role of our Board of Trustees is to oversee our performance management and objectives. They provide the robust and vibrant governance required to ensure we remain focused, operate effectively and achieve our ambitions to grow. All our trustees share a mutual desire to make a hands-on contribution to the success of Making Space, and the quality of care and support we provide to the people who use our services.